
















## Lazy Dog Blues

### DO YOU KNOW?

place the correct answer in the blank

- A.  \_\_\_\_\_
- B.  \_\_\_\_\_
- C.  \_\_\_\_\_
- D.  \_\_\_\_\_
- E.  \_\_\_\_\_
- F.  \_\_\_\_\_
- G.  \_\_\_\_\_
- H.  \_\_\_\_\_
- I. *D.C. al Fine* \_\_\_\_\_
- J.  \_\_\_\_\_
- K. *ritardando* \_\_\_\_\_
- L.  \_\_\_\_\_
- M.  \_\_\_\_\_
- N.  \_\_\_\_\_
- O.  \_\_\_\_\_
- P.  \_\_\_\_\_
- Q.  \_\_\_\_\_

- 1. Half Note
- 2. Quarter Note
- 3. Whole Note
- 4. Dotted Half Note
- 5. Flat Sign
- 6. Gradually play slower
- 7. Time Signature
- 8. G-Clef or Treble Clef
- 9. F-Clef or Bass Clef
- 10. Sharp Sign
- 11. Natural Sign
- 12. Brace
- 13. Accent Mark
- 14. Pedal Mark
- 15. Two-Eighth Notes
- 16. Hold the key down a little longer
- 17. Go back to the beginning and play until the *Fine*.



# Lazy Dog Blues

(orchestrated accompaniment  
has a 2 measure count-in)

©Mayron Cole

CREATED BY  
MAYRON COLE



*Slowly*

1

Pre-1 1 2 3 4

5

5 6 7 8 9 10

11 12 13 14 15 16

*ritardando*

## Little Liza Jane and Bingo

### Introducing **DYNAMICS**!

In Little Liza Jane, you will see dynamic markings written in the space between the staves: *mf*, *f*, *p*. These are abbreviations of Italian words that tell you how loudly to play.

*p* is the abbreviation for *piano* which tells you to play *softly*.

*mp* is the abbreviation for *mezzo piano* which tells you to play *medium softly*.

*pp* is the abbreviation for *pianissimo* which tells you to play *very softly*.

*f* is the abbreviation for *forte* which tells you to play *loudly*.

*mf* is the abbreviation for *mezzo forte* which tells you to play *medium loudly*.

*ff* is the abbreviation for *fortissimo* which tells you to play *very loudly*.

### DO YOU KNOW?

1. In what language are dynamic markings?

\_\_\_\_\_ (French, Italian, or Greek)

2. What is the abbreviation for *forte*? \_\_\_\_\_

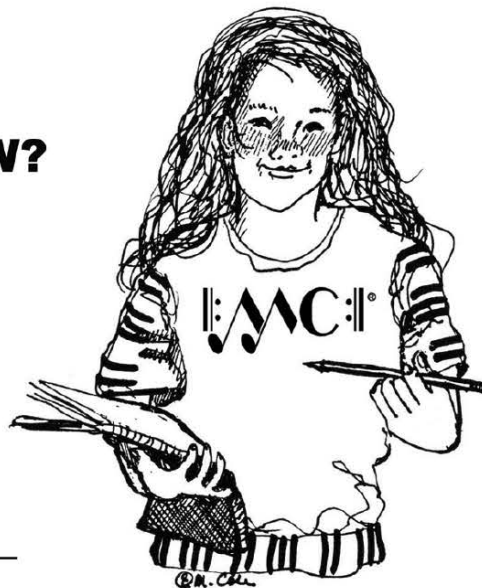
3. *p* tells you to play \_\_\_\_\_ (softly or loudly).

4. What is the abbreviation for *mezzo forte*? \_\_\_\_\_

5. *pp* tells you to play \_\_\_\_\_ (very softly or very loudly).

6. What Italian word is *ff* the abbreviation for? \_\_\_\_\_

7. What Italian word is *mp* the abbreviation for? \_\_\_\_\_



# Little Liza Jane

(orchestrated accompaniment  
has a 2 measure count-in)

Folk Song  
©arranged by  
Mayron Cole

*Playfully* 1

*mf* 1 2 3 4

Li'l Li - za Jane!

1

5 6 7 8

Li'l Li - za Jane!

*f* 9 10 11 12

Oh! Li'l Li - za Jane!

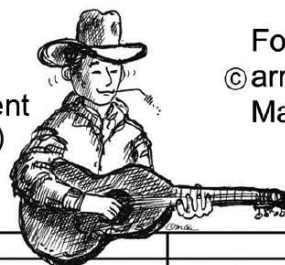
*p* 13 Oh! Li'l 14 Li - za! 15 Li'l Li - za 16 Jane!



# Bingo

(orchestrated accompaniment  
has a 2 measure count-in)

Folk Song  
© arranged by  
Mayron Cole



*Waggin' Speed* 2

*mf* Pre-1

1 2 3

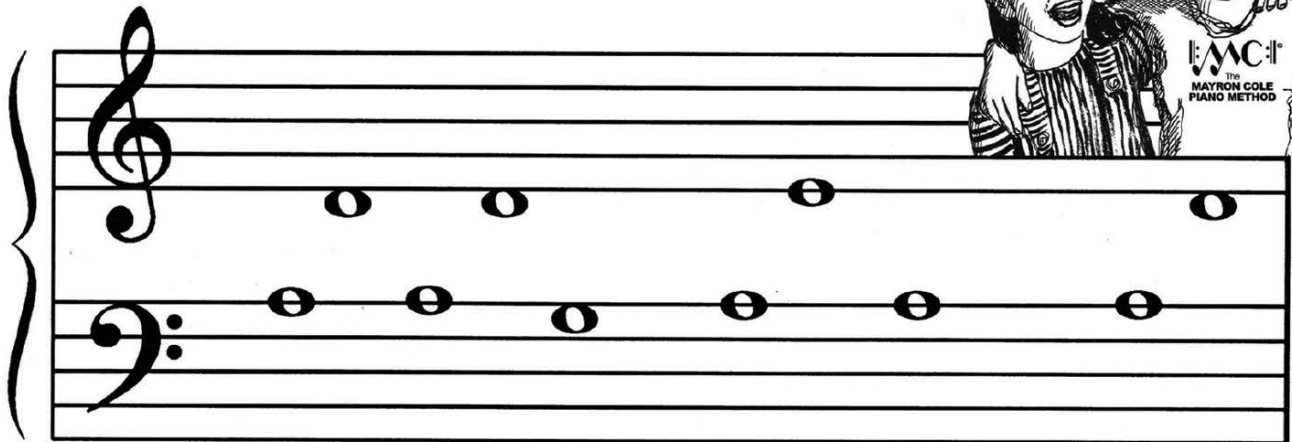
5

4

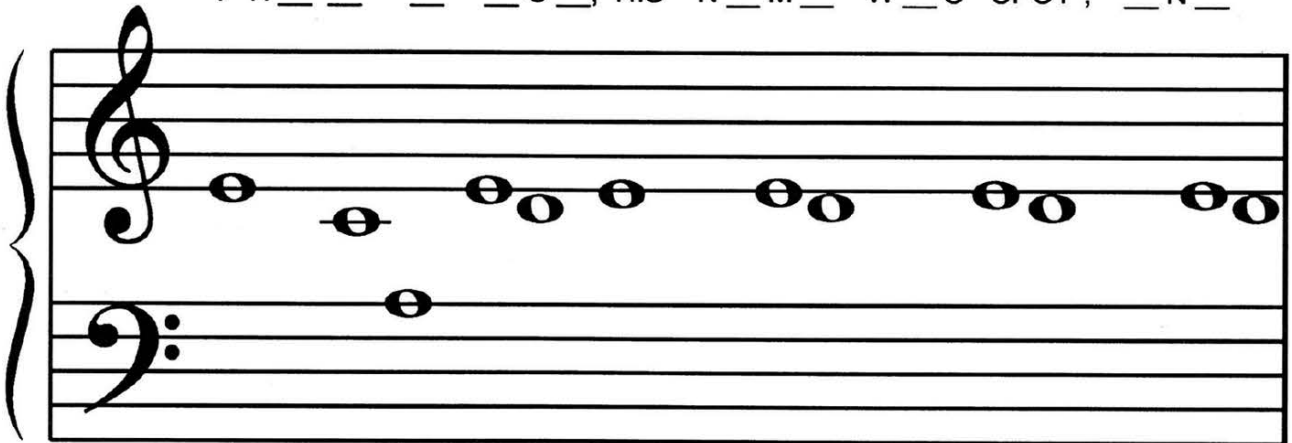
*f* 5 6 7 8

*mp* 9 10 11 12

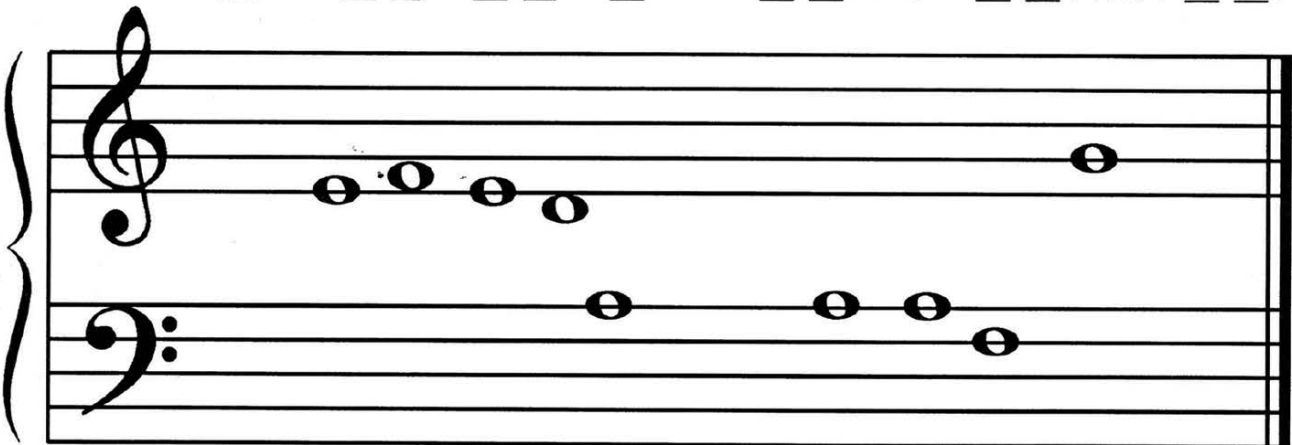
Write the letter names on the blanks below  
to solve the Mystery Message!



I H \_ \_ \_ O \_ , HIS N \_ M \_ W \_ S "SPOT", \_ N \_






WH \_ N I \_ \_ LL \_ \_ H \_ HOPP \_ \_ ! H OPP \_ \_ ! HOPP \_ \_ !



'TILL ON \_ \_ IN \_ \_ \_ Y SPOT S \_ W \_ \_ RO \_ !  
THAT'S WHEN SPOT KNEW HE WAS A DOG ! ©

## Quiet Music and Brahms' Lullaby

This  is one eighth note. In Brahms' Lullaby, you will see two-eighths written like this  and like this .


In Brahms' Lullaby you will also see long, curved lines over and under the notes. These curved lines are called SLUR MARKS or PHRASE MARKS. They tell you to play smoothly. Do you see the slur marks in Brahms' Lullaby on page 96 and 97? \_\_\_\_\_ (yes or no)

### DO YOU KNOW?

place the correct answer in the blank

- A. gradually play slower \_\_\_\_\_
- B. play loudly \_\_\_\_\_
- C. play medium softly \_\_\_\_\_
- D. play smoothly \_\_\_\_\_
- E. play very softly \_\_\_\_\_
- F. hold a little longer \_\_\_\_\_
- G. play medium loudly \_\_\_\_\_
- H. play softly \_\_\_\_\_
- I. play very loudly \_\_\_\_\_
- J. return to your original speed \_\_\_\_\_



- 1. *p*
- 2. *mf*
- 3. *f*
- 4. *a tempo*
- 5. 
- 6. *pp*
- 7. *mp*
- 8. *ritardando*
- 9. *ff*
- 10. slur mark or phrase mark



# Quiet Music

(orchestrated accompaniment  
has a 2 measure count-in)

© Mayron Cole

*Shhhh!*

1

*p* 1 2 3 4 5

3

6 7 8 9 10

*ritardando* *a tempo*

3



11 12 *pp*

# Brahms' Lullaby

Johannes Brahms  
(1833-1897)

© arranged by  
Mayron Cole

Quietly

*p*

Pre-1

1

2

2

3

4

5

4

6

7

8

(orchestrated accompaniment has a 2 measure count-in...  
since there is a split measure, the 2 measure count-in will be 5 beats)

